

FOLGER ADAM[®]

ELECTRIC DOOR CONTROLS

by Hanchett Entry Systems, Inc.

Industrial Grade

Electric Strikes

2006 Catalog
300 Series
700 Series



INDUSTRIAL GRADE

About Folger Adam Electric Door Controls

In 1880, William J. Adam founded Adam Steel and Wire Works in Illinois, producing ornamental fencing and grillwork. His son Folger later changed the company name to Folger Adam and focused on manufacturing detention cells.

In the early 20th century, Folger Adam expanded its operations and assembled a wide variety of mechanical locks and locking hardware. After World War II, the company developed new electromechanical locks, including electric strikes to meet a rising demand for detention hardware.



Today, Folger Adam Electric Door Controls, headquartered in Phoenix, Arizona, is well known for producing the highest quality electric strikes in the industry for high-security requirements in commercial, industrial and institutional facilities. All Folger Adam electric strikes are adaptable to a wide variety of security access control requirements and are designed for installations where extra heavy-duty durability and tamper resistance is needed.

Folger Adam EDC is a division of Hanchett Entry Systems, Inc., an ASSA ABLOY Group company. ASSA ABLOY is the world's leading manufacturer and supplier of locking solutions, meeting tough end-user demands for safety, security and user friendliness.

Hanchett Entry Systems, Inc. is ISO 9001 certified.

About Folger Adam

Table of Contents

Glossary	2	310-4, 310-4-100, 310-5	7
Selection Guide	3	310-4-1, 310-4-2, 310-4-3, 310-4-30	9
Discontinued Products	3	310-6-8, 310-6-1, 310-6-2, 310-6-2, 310-6-30	11
Comparison Chart	4	712, 712-75, 732, 732-75	13
Warranty Information	4	740-75, 742-75	15
310-2, 310-2 3/4, 310-3-1, 310-2 3/4OB, 310-2 3/4U	5	Mechanical & Electrical Accessories	17

ELECTRIC STRIKES

General Terms

AC	Alternating current
DC	Direct current
N/A	Not available
LH	Left handed
RH	Right handed
FS	Fail safe - power to lock
Fail Secure ¹	Fail Secure ¹ - power to unlock
V	Voltage
OB	Open Back

300 Series Latchbolt Keepers

1/2"	For 1/2" and 5/8" throw latchbolts (310-2, 310-5 & 310-6)
3/4"	For 3/4" throw latchbolts (310-2 3/4)
1"	For 3/4" and 1" throw latchbolts (310-3-1)
PK	For pullman type latchbolts (310-4)
U	For preassembled locks (unit and mono) (310-2 3/4U)

300 Series Monitor Switches

LBM	Latchbolt monitor
LCM	Locking cam monitor
LCBM	Locking cam and latchbolt monitor
LCBMA	Locking cam and latchbolt monitor, and an auxiliary switch

700 Series Latchbolt Keepers

1/2"	For 1/2" and 5/8" throw latchbolts
3/4"	For 3/4" throw latchbolts

700 Series Monitor Switches

LBM	Latchbolt monitor
LCM	Locking cam monitor
LBMLCM	Latchbolt and locking cam monitor

External Finishes

BHMA	US	
605	03	Polished brass
606	04	Satin brass, clear coated
612	10	Satin bronze plated, clear coat
613	10B	Oxidized, satin bronze plated, relieved, oil rubbed
622	19	Flat black coated (310-5 only)
625	26	Bright chromium plated (310-4-1, 310-4-2, 310-4-3 & 310-4-30 only)
626	26D	Satin chromium plated (310-4-1, 310-4-2, 310-4-3 & 310-4-30 only)
627	27	Satin aluminum, clear coated
628	28	Satin aluminum, clear anodized
629	32	Polished stainless steel
630	32D	Satin stainless steel

¹ The term "Non-Fail Safe" (NFS) has been changed to Fail Secure to conform with ANSI/BHMA standards and definitions. Fail Secure is the standard operation mode for all FAEDC electric strikes and therefore does not require a letter designation when ordering.



INDUSTRIAL GRADE

Quick Product Selection Guide

Type of Locking Hardware	Latchbolt Throw	Deadbolt Throw	Door Opening	Model No.	Page
Bored Locks, Mortise Locks and Mortise Exit Devices	1/2" or 5/8"	N/A	Single Door or Pair of Doors*	310-2	5
				712	13
				732	13
	3/4"	N/A	Pair of Doors*	310-2 3/4 OB	5
				310-2 3/4	5
				712-75	13
732-75 742-75				13 15	
Auxiliary Rim Locks	1/2" or 5/8"	N/A	Single Door	310-5	7
Rim Exit Devices	3/4" Pullman	N/A	Single Door	310-4	7
			Pair of Doors	310-4-100	7
Surface, Vertical-Rod Exit Devices	3/4" Pullman	N/A	Single Door	310-4	7
			Pair of Doors	310-4-1	9
				310-4-2	9
				310-4-3	9
				310-4-30	9
Concealed, Vertical- Rod Exit Devices	1/2" or 5/8"	N/A	Single Door	310-6-8	11
			Pair of Doors	310-6-1	11
				310-6-2	11
				310-6-3	11
				310-6-30	11

* May require special adaptation for wood-door application.

Discontinued Products and Product Changes

Finishes for all models except 310-4-1, 310-4-2, 310-4-3 and 310-4-30:
 625 (US26) Bright chromium plated (replaced with 629 Polished Stainless Steel)
 626 (US26D) Satin chromium plated (replaced with 630 Satin Stainless Steel)

410 Series:
 Can be purchased from Rixson. Call 800-457-5670

All Electromagnetic Locks and Power Supplies:
 Can be purchased from Securitron. Call 800-624-5625

Selection Guide

ELECTRIC STRIKES

Folger Adam	310-2	310-2 3/4	310-3-1	310-2 3/4OB	310-2 3/4 U	310-5	310-4
Von Duprin	6215	6224	6216	6222		6114	6112
	6226	6214					

Folger Adam	310-4-100	310-4-1	310-4-2	310-4-3	310-4-30	310-6-8	310-6-1
Von Duprin	6121						

Folger Adam	310-6-2	310-6-3	310-6-30
Von Duprin			

Folger Adam	712	712-75	732	732-75	740-75	742-75
Von Duprin	6211	6211	6211WF	6211WF	6210	6210

Warranty Information

Limited Warranty: The Hassle-free Guarantee

1 Year "No Questions Asked" Warranty - Includes all Folger Adam EDC electric strikes and electrical components.

5 Year Limited Warranty:

Mechanical Components: 5 Years - 300 and 700 Series Electric Strikes.

Extended Warranty on Electrical Components:

The HES Smart-Pac II™ power controller installed with any Folger Adam EDC electric strike extends the 1-year warranty on electrical components to the full 3-5 year warranty of the electric strike. All other electrical components and accessories have a 1 year warranty.

These warranties do not apply to any product or part there of which has been damaged through alteration, mishandling, misuse, neglect or accident. These warranties cover only Folger Adam EDC products and are in lieu of all other warranties expressed or implied. No person or representative is authorized to assume for the company any other liability in connection with the sale of this product. These warranties are valid in the USA and Canada only.

Cross Reference Chart & Warranty Information

FOLGER ADAM®
ELECTRIC DOOR CONTROLS

INDUSTRIAL GRADE

Application

These electric strikes are used with bored locks, mortise locks* and mortise exit devices.



mortise locks with deadbolts



mortise locks without deadbolts



fire rated



UL 1034 burglary rated

310-3-1

310-2 3/4 U

310-2 3/4 OB

310-2 3/4

310-2

310-2

For a 1/2" or 5/8" throw latchbolt (without deadbolt) on single and pairs of doors.

310-2-3/4

For a 3/4" throw latchbolt (without deadbolt) on single doors.

310-2 3/4 OB

For a pair of doors, without a door coordinator, which are equipped with a lock having a 3/4" throw latchbolt (without deadbolt).

310-2 3/4 U

For use with a pre-assembled or unit lock (not shown).

310-3-1

For a lockset with both a 3/4" throw latchbolt and a 1" throw deadbolt.

- Deadbolt must be retracted manually.
- Position of block within cavity is adjustable to properly locate auxiliary latchbolt for deadlocking purposes.

*Note: These product will require relocation of the center line, when used with mortise locks.



310-2

310-2 3/4

310-2 3/4OB



310-2 3/4U

310-3-1

ELECTRIC STRIKES

Specifications

- DoD FSC 5340
- UL 10C Listed for fire door assemblies up to 3 hours.
(310-2, 310-2 3/4, 310-2 3/4U and 310-3-1 NFS Models only)
- UL1034, burglary resistance rated
- ANSI/BHMA A156.31 - Grade 1
- NFPA-252 Fire door conformant
- ASTM-E152 Fire door conformant
- 300-86-SA - City of New York - BSA

Product Features

- Tamper resistant, heavy-duty construction
- Constructed entirely of stainless steel for strength and corrosion resistance
- Horizontally adjustable keeper to allow for door and frame misalignment
- 3/4" (19mm) keeper depth (310-2 3/4 & 310-2 3/4OB)
- 1/2" (13mm) keeper depth (310-2)
- Non-handed, reversible
- Fail Secure (standard)
- Fail Safe (FS-optional)
- Plug-in connector
- Five year limited warranty

Optional Features

MONITORING

- LCM Locking Cam Monitor
- LBM Latchbolt Monitor
- LCBM Latchbolt & Locking Cam Monitor
- LCBMA Latchbolt & Locking Cam Monitor with Auxiliary Switch

OPTIONS

- Extended Lip (must specify length)

Voltages

- DC: 12D (.51A), 24D (.25A)

Faceplate Finishes

- 605 (US3) Bright brass
- 606 (US4) Satin brass, clear coated
- 612 (US10) Satin bronze, clear coated
- 613 (US10B) Oxidized satin bronze, oil rubbed
- 629 (US32) Polished stainless steel
- 630 (US32D) Satin stainless steel

Accessories

- 2001-Plug-in Bridge Rectifier
- 2001-1-Wire-in Bridge Rectifier
- 2005-Smart-Pac II™
- 2006P-Plug-in Buzzer
- 152-Universal Mounting Tabs
- 310-2-3-Astragal
- 2004-ElectroLynx Connector

310-2

310-2 3/4

310-2 3/4OB

310-2 3/4U

310-3-1

310 Series

¹ The term "Non-Fail Safe" (NFS) has been changed to Fail Secure to conform with ANSI/BHMA standards and definitions. Fail Secure is the standard operation mode for all FAEDC electric strikes and therefore does not require a letter designation when ordering.



INDUSTRIAL GRADE

Application
 These electric strikes are used with either preassembled locks, auxiliary rim locks or rim exit devices.

- 
 rim exit devices
- 
 specialty locksets
- 
 fire rated
- 
 UL 1034 burglary rated

310-4

For a rim exit device having a pullman style latchbolt - used on a single door opening or the top of a surface vertical rod exit device.

310-4-100

For a rim exit device having a pullman style latchbolt - used on the inactive leaf of a pair of doors, which are equipped with a door coordinator. Note: not fire rated.

310-5

For an auxiliary rim lock having a 1/2" or 5/8" throw latchbolt. Note: not fire rated.



310-4



310-4-100



310-5

*When using an electric strike in conjunction with a vertical rod exit device, it is necessary that:

1. The bottom rod of the exit device be removed or made inoperative.
2. The latchbolt of the exit device be the "Pullman" or beveled type.
3. The latchbolt to be free-latching and remain projected while the door is open. Mechanisms that hold the latchbolt retracted while the door is open, and automatically release it when the door is closed, must be removed or made inoperative.

310-5

310-4-100

310-4

ELECTRIC STRIKES

310-4

310-4-100

310-5

Specifications

- DoD FSC 5340
- UL 10C Listed for fire door assemblies up to 3 hours.
(310-4 NFS Models only)
- UL1034, burglary resistance rated
- ANSI/BHMA A156.31 - Grade 1
- NFPA-252 Fire door conformant
- ASTM-E152 Fire door conformant
- 300-86-SA - City of New York - BSA

Product Features

- Tamper resistant, heavy-duty construction
- Constructed entirely of stainless steel for strength and corrosion resistance
(310-5 internal parts only)
- Horizontally adjustable keeper to allow for door and frame misalignment
- Pullman keeper (310-4 and 310-4-100)
- 3/4" (19mm) keeper depth (310-4 and 310-4-100)
- 1/2" (13mm) keeper depth (310-5)
- Non-handed, reversible
- Fail Secure¹ (standard)
- Fail Safe (FS-optional)
- Plug-in connector
- Five year limited warranty

Optional Features

MONITORING

- LCM Locking Cam Monitor
- LBM Latchbolt Monitor
- LCBM Latchbolt & Locking Cam Monitor
- LCBMA Latchbolt & Locking Cam Monitor
with Auxiliary Switch

OPTIONS

- Faceplate Thickness - 3/4" standard,
1/2" also available (310-4)

Voltages

- DC: 12D (.51A), 24D (.25A)

Faceplate Finishes

- 605 (US3) Bright brass
- 606 (US4) Satin brass, clear coated
- 612 (US10) Satin bronze, clear coated
- 613 (US10B) Oxidized satin bronze, oil rubbed
- 629 (US32) Polished stainless steel
- 630 (US32D) Satin stainless steel

Accessories

- 2001-Plug-in Bridge Rectifier
- 2005-Smart-Pac II™
- 2006P-Plug-in Buzzer
- 2001-1-Wire-in Bridge Rectifier
- Universal Mounting Tabs
- 310-2-3-Astragal
- 2004-ElectroLynx Connector

310 Series

¹ The term "Non-Fail Safe" (NFS) has been changed to Fail Secure to conform with ANSI/BHMA standards and definitions. Fail Secure is the standard operation mode for all FAEDC electric strikes and therefore does not require a letter designation when ordering.

* 310-5 available only in 622 (US19) finish



INDUSTRIAL GRADE

Application

These electric strikes are used on a pair of doors (without mullion) which are equipped with surface, vertical-rod exit devices having a swinging, pullman style latchbolt.*



specialty locksets



UL 1034 burglary rated

310-4-1

For both leaves of a pair of doors - when spacing of the vertical rod is between 4" and 4 3/4"

310-4-2

For both leaves of a pair of doors - when spacing of the vertical rods is between 4 5/8" and 5 3/8"

310-4-3

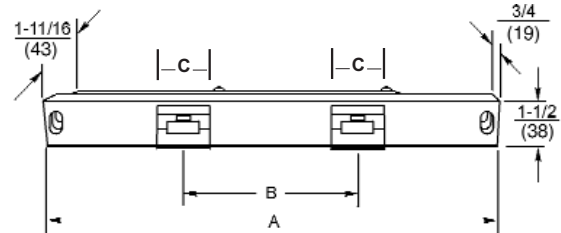
For both leaves of a pair of doors - when spacing of the vertical rods is between 5 1/4" and 6"

310-4-30

For both leaves of a pair of doors - when spacing of the vertical rods is between 2 5/8" and 3 3/8"



- 310-4-1**
- 310-4-2**
- 310-4-3**
- 310-4-30**



Model	A	B	C
310-4-1	13-3/8" [340]	4-3/8" [111]	1-13/16" [45.3]
310-4-2	14" [356]	5" [127]	1-13/16" [45.3]
310-4-3	14-5/8" [371]	5-5/8" [143]	1-13/16" [45.3]
310-4-30	12" [305]	3" [76]	1-13/16" [45.3]

Note: Double-door models are available with four different center-to-center dimensions between latchbolt keepers. Keepers are wide enough to compensate for vertical-rod exit bolts which may be as much as 3/8" (10mm) off center-to-center dimension, either way.

*When using an electric strike in conjunction with a vertical rod exit device, it is necessary that:

1. The bottom rod of the exit device be removed or made inoperative.
2. The latchbolt of the exit device be the "Pullman" or beveled type.
3. The latchbolt to be free-latching and remain projected while the door is open. Mechanisms that hold the latchbolt retracted while the door is open, and automatically release it when the door is closed, must be removed or made inoperative.

310-4-30

310-4-3

310-4-2

310-4-1

ELECTRIC STRIKES

310-4-1

Specifications

- DoD FSC 5340
- UL1034, burglary resistance rated
- ANSI/BHMA A156.5 - Grade 1
- 300-86-SA - City of New York - BSA

310-4-2

Product Features

- Tamper resistant, heavy-duty construction
- Constructed entirely of stainless steel for strength and corrosion resistance
- Horizontally adjustable keeper to allow for door and frame misalignment
- Pullman keeper
- Non-handed, reversible
- Fail Secure¹ (standard)
- Fail Safe (FS-optional)
- Plug-in Connector
- Five year limited warranty

310-4-3

Optional Features

MONITORING

- LCM Locking Cam Monitor
- LBM Latchbolt Monitor
- LCBM Latchbolt & Locking Cam Monitor
- LCBMA Latchbolt & Locking Cam Monitor with Auxiliary Switch

Faceplate Finishes

- 605 (US3) Bright brass
- 606 (US4) Satin brass, clear coated
- 612 (US10) Satin bronze, clear coated
- 613 (US10B) Oxidized satin bronze, oil rubbed
- 629 (US32) Polished stainless steel
- 630 (US32D) Satin stainless steel

310-4-30

Voltages

- DC: 12D (.51A), 24D (.25A)

Accessories

- 2001-Plug-in Bridge Rectifier
- 2005-Smart-Pac II™
- 2006P-Plug-in Buzzer
- 2001-1-Wire-in Bridge Rectifier
- Universal Mounting Tabs
- 310-2-3-Astragal
- 2004-ElectroLynx Connector

310 Series

¹The term "Non-Fail Safe" (NFS) has been changed to Fail Secure to conform with ANSI/BHMA standards and definitions. Fail Secure is the standard operation mode for all FAEDC electric strikes and therefore does not require a letter designation when ordering.

FOLGER ADAM®
ELECTRIC DOOR CONTROLS

INDUSTRIAL GRADE

Application

These electric strikes are used on a pair of doors (without a mullion) which are equipped with concealed, vertical-rod exit devices having a 1/2" or 5/8" throw latchbolt.*



specialty locksets



UL 1034 burglary rated

310-6-30

310-6-8

For only the active leaf of a pair.

310-6-3

310-6-1

For both leaves of a pair of doors - when spacing of the vertical rods is between 4" and 4 3/4"

310-6-2

310-6-2

For both leaves of a pair of doors - when spacing of the vertical rods is between 4 5/8" and 5 3/8"

310-6-1

310-6-3

For both leaves of a pair of doors - when spacing of the vertical rods is between 5 1/4" and 6"

310-6-8

310-6-30

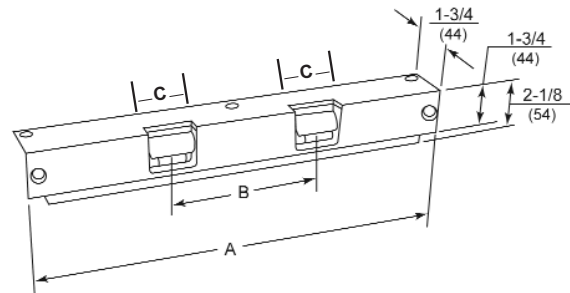
For both leaves of a pair of doors - when spacing of the vertical rods is between 2 5/8" and 3 3/8"



310-6-8



**310-6-1
310-6-2
310-6-3
310-6-30**



Model	A	B	C
310-6-1	14-1/2" [368]	4-3/8" [111]	1-13/16" [45.3]
310-6-2	15-1/8" [384]	5" [127]	1-13/16" [45.3]
310-6-3	15-3/4" [400]	5-5/8" [143]	1-13/16" [45.3]
310-6-30	13-1/8" [333]	3" [76]	1-13/16" [45.3]

Note: Double-door models are available with four different center-to-center dimensions between latchbolt keepers. Keepers are wide enough to compensate for vertical-rod exit bolts which may be as much as 3/8" (10mm) off center-to-center dimension, either way.

*When using an electric strike in conjunction with a vertical rod exit device, it is necessary that:

1. The bottom rod of the exit device be removed or made inoperative.
2. The latchbolt of the exit device be the "Pullman" or beveled type.
3. The latchbolt to be free-latching and remain projected while the door is open. Mechanisms that hold the latchbolt retracted while the door is open, and automatically release it when the door is closed, must be removed or made inoperative.

ELECTRIC STRIKES

Specifications

- DoD FSC 5340
- UL1034, burglary resistance rated
- ANSI/BHMA A156.5 - Grade 1
- 300-86-SA - City of New York - BSA

Product Features

- Tamper resistant, heavy-duty construction
- Constructed entirely of stainless steel for strength and corrosion resistance
- Horizontally adjustable keeper to allow for door and frame misalignment
- 1/2" (13mm) keeper depth
- Non-handed, reversible
- Fail Secure¹ (standard)
- Fail Safe (FS-optional)
- Plug-in Connector
- Five year limited warranty

Optional Features

MONITORING

- LCM Locking Cam Monitor
- LBM Latchbolt Monitor
- LCBM Latchbolt & Locking Cam Monitor
- LCBMA Latchbolt & Locking Cam Monitor with Auxiliary Switch

Voltages

- DC: 12D (.51A), 24D (.25A)

Faceplate Finishes

- 612 (US10) Satin bronze, clear coated
- 627 (US27) Polished stainless steel

Accessories

- 2001-Plug-in Bridge Rectifier
- 2005-Smart-Pac II™
- 2006P-Plug-in Buzzer
- Full-wave Bridge Rectifier
- Universal Mounting Tabs
- 310-2-3-Astragal
- 2004-ElectroLynx Connector

310-6-8

310-6-1

310-6-2

310-6-3

310-6-30

310 Series

¹The term "Non-Fail Safe" (NFS) has been changed to Fail Secure to conform with ANSI/BHMA standards and definitions. Fail Secure is the standard operation mode for all FAEDC electric strikes and therefore does not require a letter designation when ordering.

FOLGER ADAM®
ELECTRIC DOOR CONTROLS

INDUSTRIAL GRADE

Application

These electric strikes are used with bored locks, mortise locks* and mortise exit devices.



For Hollow-Metal Frame Applications

featuring a square corner faceplate

712

For a 1/2" or 5/8" throw latchbolt

712-75

For a 1/2" 5/8", or 3/4" throw latchbolt

For Wood Frame Applications

featuring an offset solenoid

732

For a 1/2" or 5/8" throw latchbolt

732-75

For a 1/2" 5/8", or 3/4" throw latchbolt

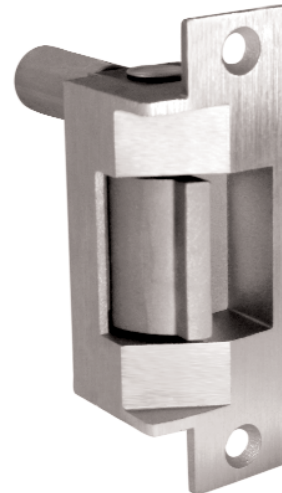
*Note: These product will require relocation of the center line, when used with mortise locks.



712



712-75



732
732-75**

** indicates model shown in picture

732-75

732

712-75

712

ELECTRIC STRIKES

712

712-75

732

732-75

Specifications

- DoD FSC 5340
- UL 10C Listed for fire door assemblies up to 3 hours.
(NFS Models only)
- UL1034, burglary resistance rated
- ANSI/BHMA A156.31 - Grade 1
- NFPA-252 Fire door conformant
- ASTM-E152 Fire door conformant
- 300-86-SA - City of New York - BSA

Product Features

- Tamper resistant, heavy-duty construction
- Constructed entirely of stainless steel for strength and corrosion resistance
- Horizontally adjustable keeper to allow for door and frame misalignment
- 1/2" (13mm) keeper depth (712, 732)
- 3/4" (19mm) keeper depth (712-75, 732-75)
- Non-handed, reversible
- Fail Secure¹ (standard)
- Fail Safe (FS-optional)
- Plug-in Connector
- Five year limited warranty

Optional Features

MONITORING

- LCM Locking Cam Monitor
- LBM Latchbolt Monitor
(712, 732)
- LBMLCM Latchbolt & Locking Cam
Monitor

Voltages

- DC: 12D (.51A), 24D (.25A)

Faceplate Finishes

- 605 (US3) Bright brass
- 606 (US4) Satin brass, clear coated
- 612 (US10) Satin bronze, clear coated
- 613 (US10B) Oxidized satin bronze, oil rubbed
- 629 (US32) Polished stainless steel
- 630 (US32D) Satin stainless steel

Accessories

- 2001-Plug-in Bridge Rectifier
- 2005-Smart-Pac II™
- 2006P-Plug-in Buzzer
- Universal Mounting Tabs
- 710-2-3-Astragal
- 2004-Electrolynx Connector

700 Series

¹The term "Non-Fail Safe" (NFS) has been changed to Fail Secure to conform with ANSI/BHMA standards and definitions. Fail Secure is the standard operation mode for all FAEDC electric strikes and therefore does not require a letter designation when ordering.



INDUSTRIAL GRADE

Application
 These electric strikes are used with bored locks, mortise locks and mortise exit devices.



cylindrical locksets



mortise locks
without deadbolts



UL 1034
burglary rated

For Hollow-Metal Frame Applications
 featuring a square corner faceplate

742-75

For a 1/2" 5/8", or 3/4" throw latchbolt.



742-75

742-75

¹ The term "Non-Fail Safe" (NFS) has been changed to Fail Secure to conform with ANSI/BHMA standards and definitions. Fail Secure is the standard operation mode for all FAEDC electric strikes and therefore does not require a letter designation when ordering.

ELECTRIC STRIKES

742-75

Specifications

- UL 10C Listed for fire door assemblies up to 3 hours. (Fail Secure Models only)
- UL1034, burglary resistance rated
- ANSI/BHMA A156.31 - Grade 1

Product Features

- Tamper resistant, heavy-duty construction
- Constructed entirely of stainless steel for strength and corrosion resistance
- Horizontally adjustable keeper to allow for door and frame misalignment
- Deadlatch tabs included
- 3/4" (19mm) keeper depth
- Non-handed, reversible
- Fail Secure¹ (standard)
- Fail Safe (FS-optional)
- Plug-in Connector
- Five year limited warranty

Optional Features

MONITORING

- LCM Locking Cam Monitor
- LBM Latchbolt Monitor
- LBMLCM Latchbolt and Locking Cam Monitor

Voltages

- DC: 12D (.51A), 24D (.25A)

Faceplate Finishes

- 605 (US3) Bright brass
- 606 (US4) Satin brass, clear coated
- 612 (US10) Satin bronze, clear coated
- 613 (US10B) Oxidized satin bronze, oil rubbed
- 629 (US32) Polished stainless steel
- 630 (US32D) Satin stainless steel

Accessories

- 2001-Plug-in Bridge Rectifier
- 2005-Smart-Pac II™
- 2006P-Plug-in Buzzer
- Universal Mounting Tabs
- 710-2-3-Astragal
- 2004-Electrolynx Connector

700 Series

¹The term "Non-Fail Safe" (NFS) has been changed to Fail Secure to conform with ANSI/BHMA standards and definitions. Fail Secure is the standard operation mode for all FAEDC electric strikes and therefore does not require a letter designation when ordering.








INDUSTRIAL GRADE

These HES mechanical and electrical accessories are available for all Folger Adam Electric Strikes

<p>2001: Plug-in Bridge Rectifier Will convert an AC input to full-wave rectified DC output with a 35V, 1 Amp capacity.</p>	
<p>2001-1: Wire-in Bridge Rectifier Will convert an AC input to full-wave rectified DC output with a 35V, 2 Amp capacity.</p>	
<p>2002-12: AC Transformer Will convert 110/120 VAC to 12 VAC output. 20V, 1.6 Amp max.</p> <p>2002-24: AC Transformer Will convert 110/120 VAC to 24 VAC output. 20V, .8 Amp max.</p>	
<p>2002P-24: AC Plug-in Transformer Converts 110/120 VAC to 24 VAC output. 5V, 0.2 Amp max.</p>	
<p>2003: MOV Protects against possible inrush and reverse surges.</p>	
<p>2004: ElectroLynx Connector Provides quick connect to electric strike making it ElectroLynx compatible. <small>**When ordered with electric strike.</small></p>	
<p>2005: Smart-Pac II™ In-line power control able to receive input voltages from 12-32V AC or DC. Built-in bridge rectifier provides 12 or 24VDC output. Under continuous duty the output VDC is reduced by 25% to extend the life of the electric strike. Includes in-line fuse, MOV, and 2-8 second adjustable timer.</p>	

Selection Guide

ELECTRIC STRIKES

<p>2006P: Plug-in Buzzer Audible operation indicator</p>	
<p>2007: Plug-in Pigtail Connectors With 4" wire leads</p>	
<p>2008: Plug-in Connectors 5' extension pig-tail, 10 gauge wire</p>	
<p>2009P: Plug-in LED Visible operation indicator</p>	
<p>152: Universal Mounting Tabs Designed for mounting an electric strike into an existing metal frame or door. Galvanized for corrosion resistance and shipped as a set of two (2) mounting screws included.</p>	
<p>157D: Torx Security Bit Tamper-Resistant Torx TR20 Insert Bit</p>	
<p>157: Torx Security Screws Two (2) 12-24 UNC x 1/2" FH Tamper-Resistant Pin-in-Torx screws.</p>	
<p>310-2-3: Astragals, 710-2-3: Astragals Designed to prevent tampering with the latchbolt, as well as the latchbolt keeper. Available in two models: 310-2-3, 710-2-3 for 300 Series electric strikes and 700 Series electric strikes. Standard finish is US4, satin brass, clear coated but also available in US10, US10B, US26 and US26D. Torx screws included.</p>	